

# 6B

## T1 Terraço Piso / Level 6

Private Gross Area

Área Bruta Privativa - 86.94 sqm

Interior Area

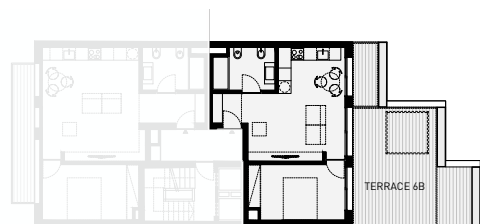
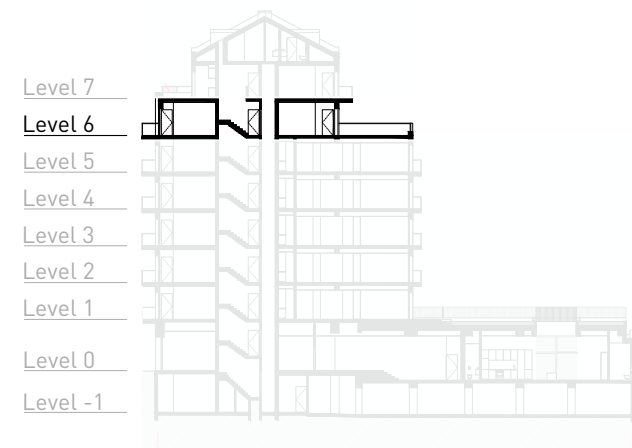
Área Interior - 51.56 sqm

Exterior Area

Área Exterior - 35.38 sqm

Parking

Estacionamento - 1 Parking



LEVEL 6 - APARTMENT 6B, TERRACE 6B