

# 2B

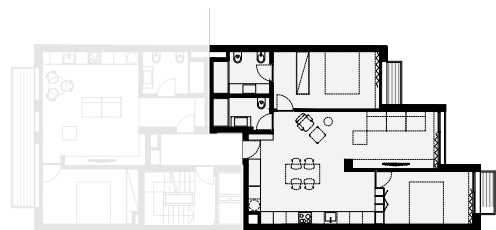
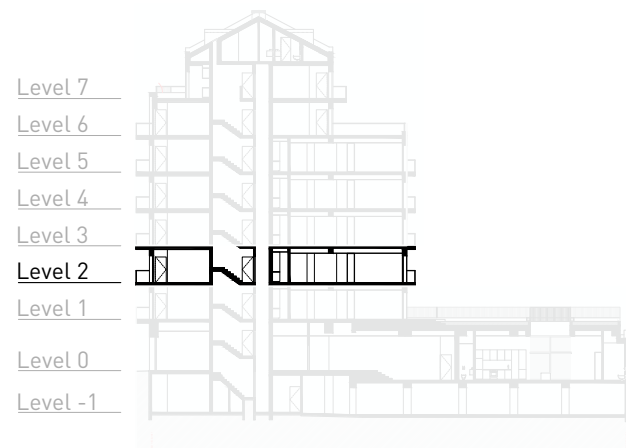
## T2 Piso / Level 2

Private Gross Area  
Área Bruta Privativa - 89.83 sqm

Interior Area  
Área Interior - 86.96 sqm

Exterior Area  
Área Exterior - 2.87 sqm

Parking  
Estacionamento - 1 Parking



LEVEL 2 - APARTMENT 2B

