

1B

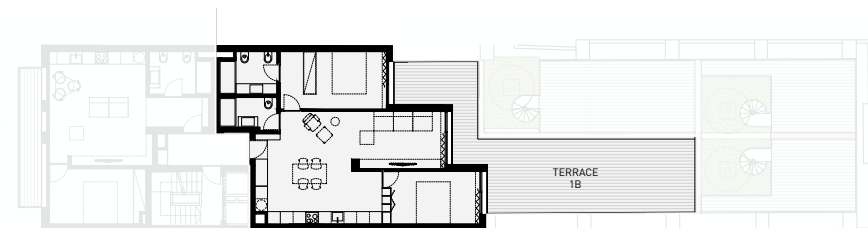
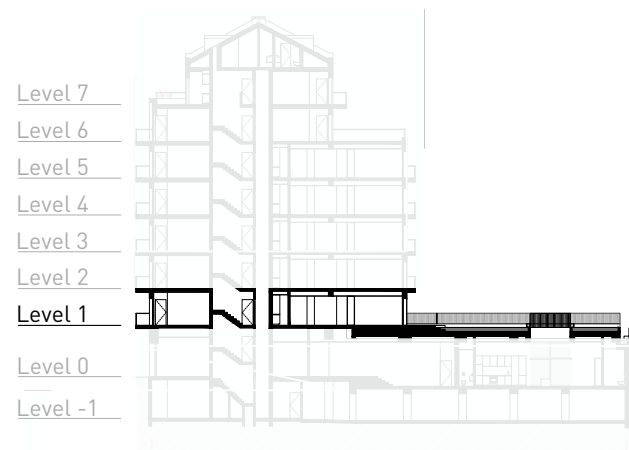
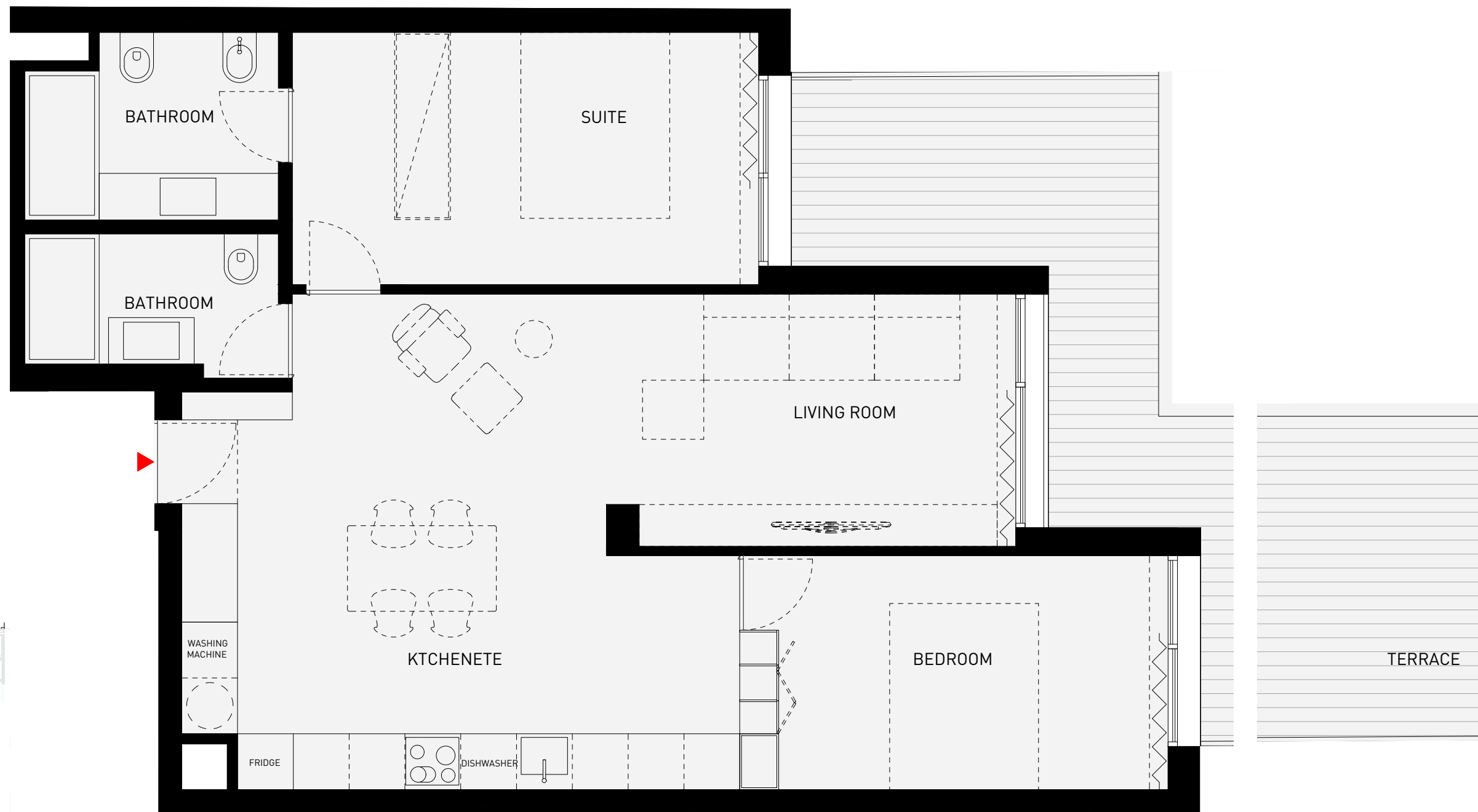
T2 Piso / Level 1

Private Gross Area
Área Bruta Privativa - 136.10 sqm

Interior Area
Área Interior - 86.96 sqm

Exterior Area
Área Exterior - 49.14 sqm

Parking
Estacionamento - 1 Parking



LEVEL 1 - APARTMENT 1B, TERRACE 1B