

0B

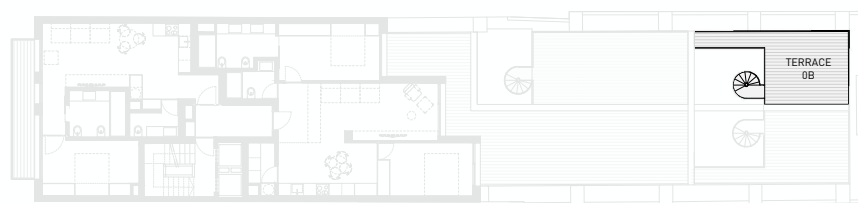
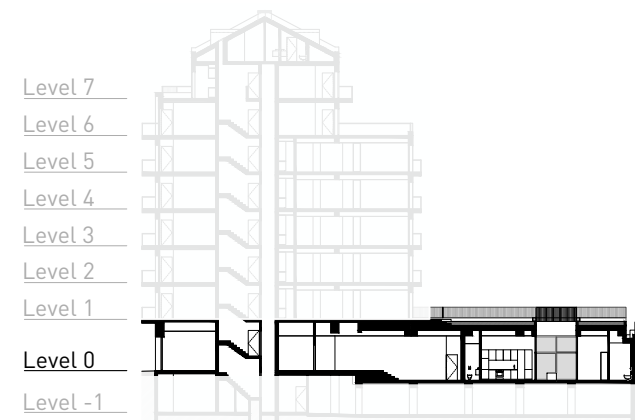
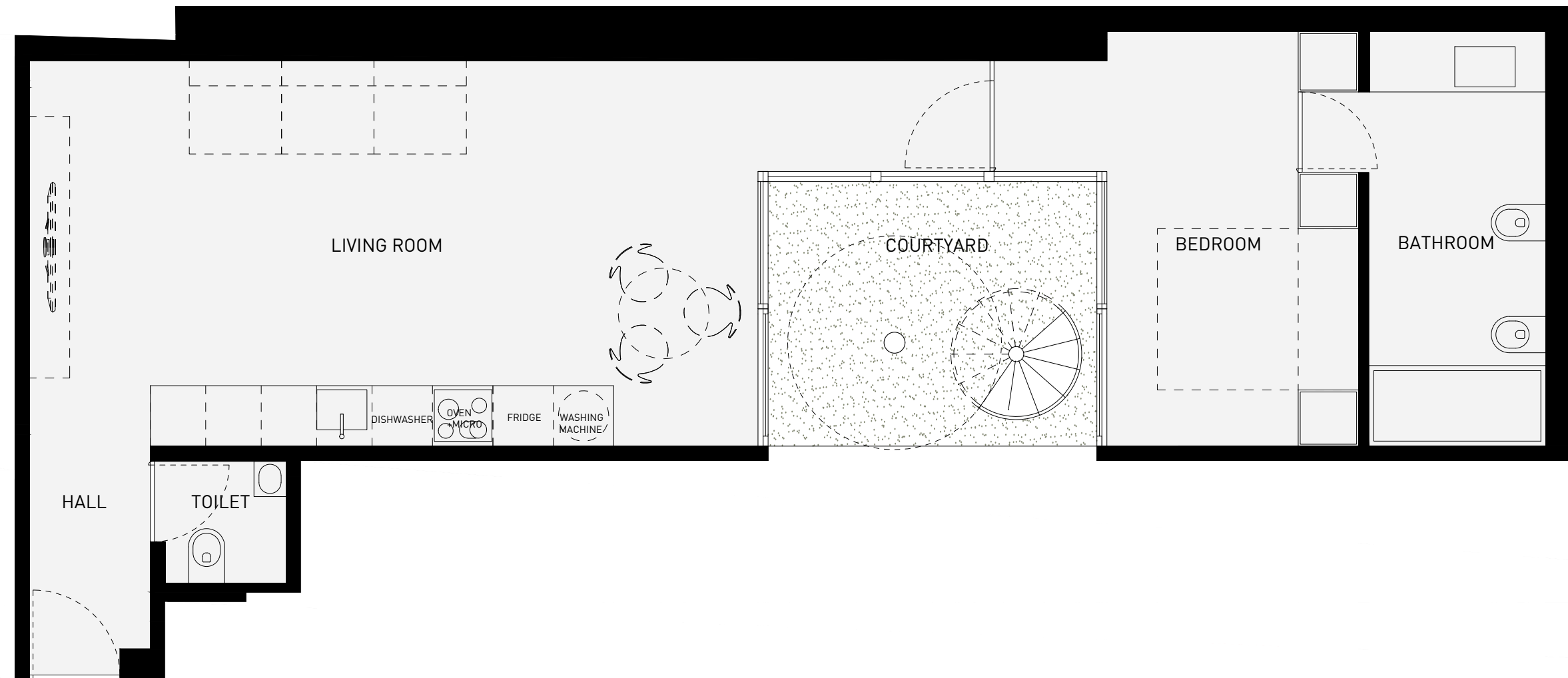
T1 Piso / Level 0

Private Gross Area
Área Bruta Privativa - 92.42 sqm

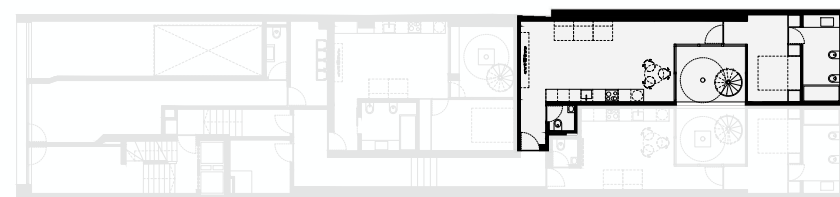
Interior Area
Área Interior - 65.81 sqm

Exterior Area
Área Exterior - 26.61 sqm

Parking
Estacionamento - 1 Parking



LEVEL 1 - TERRACE



LEVEL 0 - APARTMENT 0B