

0A

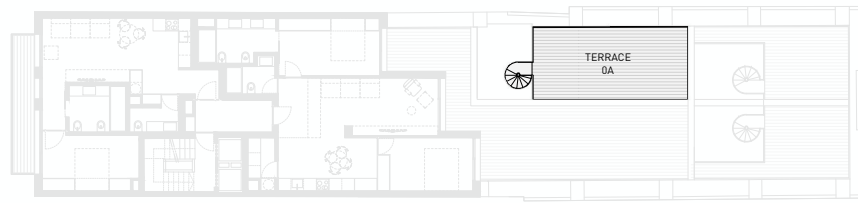
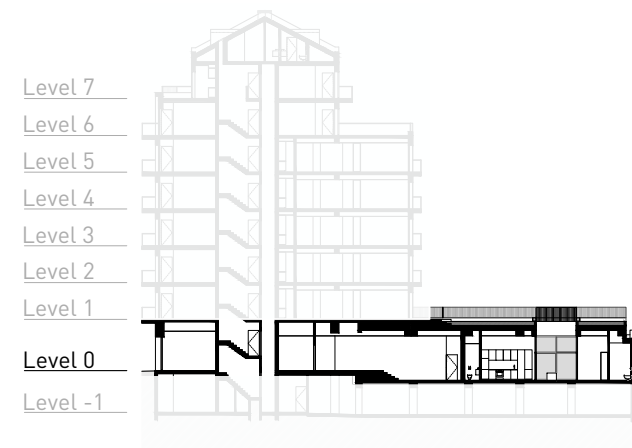
T1 Piso / Level 0

Private Gross Area
Área Bruta Privativa - 87.20 sqm

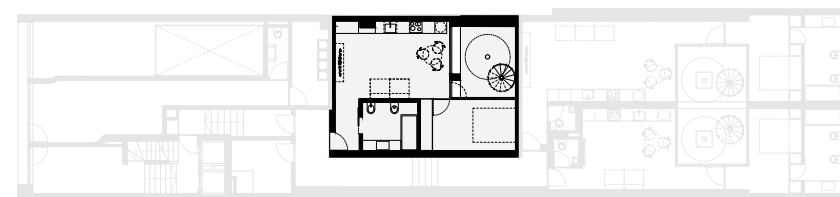
Interior Area
Área Interior - 48.64 sqm

Exterior Area
Área Exterior - 38.56 sqm

Parking
Estacionamento - 1 Parking



LEVEL 1 - TERRACE



LEVEL 0 - APARTMENT 0A